

종로유학원 1



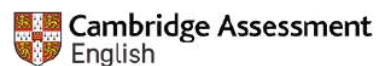
SMEAG
GLOBAL EDUCATION

CAPITAL CAMPUS

ESL · IELTS · TOEFL · TOEIC · SPEAKING MASTER
BUSINESS ENGLISH · FAMILY PROGRAM · BUSY BEE



ETS AUTHORIZED
TOEFL iBT CENTER



CONTENTS

| | |
|-------------------------|-----------|
| Contents | P 1 - P 2 |
| Greetings from SMEAG | P 3 |
| A Vision for the Future | P 4 |
| History | P 5 - P 6 |



CAMPUS FEATURES

- 07** SMEAG CAPITAL : The First Campus
Campus Features
- 09** Dormitory (with room features)
Campus Features
- 15** Classrooms
Campus Features
- 17** Student Lifestyles & Support Facilities
Campus Features

ESL 주니어

대상 : 만5세 ~ 초6



프로그램)4주 기준 84만원)

정규수업

무료선택

| Course | | Course 1 | Course 2 | Course 3 | Course 4 | Course 5 |
|--------|-------------|---|------------------------------------|----------|----------|----------|
| | | Starter | Mover | Flyer | KET | PET |
| 1 | 08:40-09:25 | 1:1 Speaking | | | | |
| 2 | 09:30-10:15 | 1:1 Listening | | | | |
| 3 | 10:25-11:10 | 1:1 Reading | | | | |
| 4 | 11:15-12:00 | 1:1 Writing | | | | |
| 5 | 13:00-13:45 | 1:4 Discussion (A) | | | | |
| 6 | 13:50-14:35 | 1:4 Discussion (B) | | | | |
| 7 | 14:45-15:30 | Special Class (1) | | | | |
| 8 | 15:35-16:20 | (Movie class) | | | | |
| 9 | 16:30-17:15 | Special Class (2) | | | | |
| 10 | 17:20-18:05 | (Homework Time) | | | | |
| 11 | 19:00-19:45 | FREE TIME | | | | |
| 12 | 19:50-20:35 | | | | | |
| 입교조건 | | 제한없음 | SMEAG 입교시험 또는 주간 모의고사 점수로 코스 변경 가능 | | | |
| 공통사항 | | ※ 주간 모의고사 100%의무 참여 (불참 및 부정행위 경고) ※ ESL 2 주니어 : 추가 1:1 Speaking 수업 제공 [매주 월~금 / 목요일 제외] | | | | |

영어 교육의 바이블

캠브리지 영어란?

캠브리지 시험은 공인 영어 시험 중 가장 오랜 역사를 지닌 시험으로, 전 세계 2만 여개의 대학 및 기업, 정부에서 인정하는 높은 공신력을 자랑합니다. 또한 한번 취득하면 평생 유효한 영어 자격증이기 때문에 해외 유학, 취업, 이민을 목적으로 많은 학생들이 캠브리지 과정을 선택하고 있습니다. SMEAG의 ESL코스는 캠브리지 영어를 기반으로 제작되어 학생들이 품격있는 실용영어를 배우고, 평생 유용한 명품 영어 자격증을 획득하실 수 있는 기회를 제공해드립니다.



Cambridge English Assessment

WHY SMEAG ESL?



CEFR & SMEAG 레벨별 코스 기준표

| SMEAG | CEFR | ESL | IELTS | TOEFL | TOEFL Foundation | TOEIC | Business | Family Program |
|-------------------------------|------|-------|-----------------|----------------|--------------------|-----------------|------------|----------------|
| Level 5 Advanced Plus | C2 | | | | | | | |
| Level 4 Advanced | C1 | ESL 5 | IELTS 6.5 - 7.0 | TOEFL 90 - 100 | | TOEIC 900 | Business 3 | |
| Level 3 Upper Intermediate | B2 | ESL 4 | IELTS 5.5 - 6.0 | TOEFL 60 - 80 | TOEFL Foundation 3 | TOEIC 700 - 800 | Business 2 | |
| Level 2 Intermediate | B1 | ESL 3 | Pre IELTS | Pre TOEFL | TOEFL Foundation 2 | TOEIC 600 | Business 1 | PET |
| Level 1 Pre Intermediate | A2 | ESL 2 | | | TOEFL Foundation 1 | Pre TOEIC | | KET |
| Level 0 Beginner | A1 | ESL 1 | | | | | | Flyers |
| | | | | | | | | Movers |
| | | | | | | | | Starters |

2가지 타입의 어린이 코스

| | 해당 코스 문의 | 해당 코스로 진행 |
|------------|--|-------------------------|
| | Capital Family program (child) | ESL주니어 |
| 해당 캠퍼스 | 캐피탈 캠퍼스 | 캐피탈 캠퍼스 |
| 정규수업 구성 | 1:1 수업 4타임 / 1:4 수업 4타임 / 그룹 액티비티 3 타임 | 1:1 수업 4타임 / 1:4 수업 2타임 |
| 그룹 액티비티 구성 | 스토리텔링, 물놀이, 댄스, 쿠키, 아트 | 해당 없음 |
| 특이 사항 | 매주 모의고사 실시 | 매주 모의고사 실시 |

영국 캠브리지 CEFR 기반 교육 커리큘럼

CEFR란 Common European Framework of Reference (유럽 공통 언어 평가 기준)의 약자입니다.

영어 능력을 기초부터 ~ 최고급까지 여섯 단계로 나누었으며 국가별, 단체별, 시험의 종류에 따라 나뉘는 주관적인 영어평가 기준의 혼동을 막기 위해서 2000년 유럽 평의회에서 채택되었습니다.

영어를 모국어로 사용하지 않는 국가에서 영어 학습자들의 영어 레벨을 규정하여 평가의 명확성을 높이며, 전 세계의 영어평가 기준으로 쓰이고 있습니다.

Cambridge English
Young Learners
Starters, Movers, Flyers



FAMILY PROGRAM

대상 : 만5세 ~ 초6



프로그램)4주 기준 154만원) 액티비티 포함

정규수업

액티비티
정규수업

| Course | | Young Learners | | | | | Parents |
|--------|-------------|--|------------------------------------|-------|-----|-----|---------------------|
| | | Starter | Mover | Flyer | KET | PET | ESL 1 |
| 1 | 08:40-9:25 | 1 : 1 Listening | | | | | 1 : 1 Listening |
| 2 | 09:30-10:15 | 1 : 1 Speaking | | | | | 1 : 1 Speaking |
| 3 | 10:25-11:10 | 1 : 1 Reading | | | | | 1 : 1 Reading |
| 4 | 11:15-12:00 | 1 : 1 Writing | | | | | 1 : 1 Writing |
| 5 | 13:00-13:45 | 1: 4 Discussion (A) | | | | | 1: 4 Discussion (A) |
| 6 | 13:50-14:35 | 1: 4 Discussion (B) | | | | | 1: 4 Discussion (B) |
| 7 | 14:45-15:30 | Daily Activities [Story telling • Swimming • Dancing • Cooking • Art] | | | | | Free time |
| 8 | 15:35-16:20 | | | | | | |
| 9 | 16:30-17:15 | | | | | | |
| 10 | 17:20-18:05 | Free time | | | | | |
| 11 | 19:00-19:45 | 1:4 Vocabulary Class (A) | | | | | |
| 12 | 19:50-20:35 | 1:4 Vocabulary Class (B) | | | | | |
| 입교조건 | | 제한없음 | A0 | A1 | A2 | B1 | SMEAG Level |
| | | | SMEAG 입교시험 또는 주간 모의고사 점수로 코스 변경 가능 | | | | |
| 공통사항 | | ※ 각 코스는 입교 조건에 해당하는 실력을 보유하여야만 신청 가능 ※ 정규 수업 및 주간 모의고사 100%의무 참여 (학부모님의 경우 모의고사는 선택적 참여 가능) | | | | | |

영국 캠브리지 CEFR 기반 교육 커리큘럼

CEFR란 Common European Framework of Reference (유럽 공통 언어 평가 기준)의 약자입니다.

영어 능력을 기초부터 ~ 최고급까지 여섯 단계로 나누었으며 국가별, 단체별, 시험의 종류에 따라 나뉘는 주관적인 영어평가 기준의 혼동을 막기 위해서 2000년 유럽 평의회에서 채택되었습니다.

영어를 모국어로 사용하지 않는 국가에서 영어 학습자들의 영어 레벨을 규정하여 평가의 명확성을 높이며, 전 세계의 영어평가 기준으로 쓰이고 있습니다.

Cambridge English
Young Learners
Starters, Movers, Flyers



ESL

대상 :활분몬 풀늄 쥬공산일색



프로그램)4주 기준 84만원)

선택
정규
수업

무
료
선
택
의
무

| Course | | Course 1 | Course 2 | Course 3 | Course 4 | Course 5 |
|--------|--|--|-----------------------|--|--|--|
| | | Beginner (A1) | Pre Intermediate (A2) | Intermediate (B1) | Upper Intermediate(B2) | Advanced (C1) |
| 0 | 06:40-08:00 | Morning Sparta (Vocabulary Class) | | | | |
| 1 | 08:40-09:25 | 1:1 Speaking | | 1:1 Speaking | | |
| 2 | 09:30-10:15 | 1:1 Listening | | 1:1 Listening | | |
| 3 | 10:25-11:10 | 1:1 Reading | | 1:1 Reading | | |
| 4 | 11:15-12:00 | 1:1 Writing | | 1:1 Writing | | |
| 5 | 13:00-13:45 | 1:4 Survival & Pattern English (A) | | 1:4 Discussion (A) | | |
| 6 | 13:50-14:35 | 1:4 Survival & Pattern English (B) | | 1:4 Discussion (B) | | |
| 7 | 14:45-15:30 | Special Class (1) | | | | |
| 8 | 15:35-16:20 | (Sitcom, Movie, Speak Up, Pronunciation, Music & English Expression) | | | | |
| 9 | 16:30-17:15 | Special Class (2) | | | | |
| 10 | 17:20-18:05 | (Sitcom, Movie, Speak Up, Pronunciation, Music & English Expression) | | | | |
| 11 | 19:00-19:45 | Evening Sparta (Grammar class) or ESL-2 (1:1 Speaking class) | | | | |
| 12 | 19:50-20:35 | | | | | |
| 입교조건 | 제한없음 | SMEAG 1L · CAMBRIDGE 120 IELTS 2.0 · TOEFL 20 TOEIC 260 이상 | | SMEAG 2L · CAMBRIDGE 130 IELTS 3.5 · TOEFL 40 TOEIC 490 이상 | SMEAG 3L · CAMBRIDGE 150 IELTS 5.0 · TOEFL 60 TOEIC 680 이상 | SMEAG 4M · CAMBRIDGE 170 IELTS 7.0 · TOEFL 95 TOEIC 905 이상 |
| | | SMEAG 입교시험 또는 주간 모의고사 점수로 코스 변경 가능 | | | | |
| 공동사항 | ※ 주간 모의고사 100%의무 참여 (불참 및 부정행위 경고) ※ ESL-2: 추가 1:1 Speaking 수업 제공 (매주 월~금 / 목요일 제외) | | | | | |

영어 교육의 바이블

캠브리지 영어란?

캠브리지 시험은 공인 영어 시험 중 가장 오랜 역사를 지닌 시험으로, 전 세계 2만 여개의 대학 및 기업, 정부에서 인정하는 높은 공신력을 자랑합니다. 또한 한번 취득하면 평생 유효한 영어 자격증이기 때문에 해외 유학, 취업, 이민을 목적으로 많은 학생들이 캠브리지 과정을 선택하고 있습니다. SMEAG의 ESL코스는 캠브리지 영어를 기반으로 제작되어 학생들이 품격있는 실용영어를 배우고, 평생 유효한 명품 영어 자격증을 획득하실 수 있는 기회를 제공해드립니다.



Cambridge English Assessment

WHY SMEAG ESL?



CEFR & SMEAG 레벨별 코스 기준표

| SMEAG | CEFR | ESL | IELTS | TOEFL | TOEFL Foundation | TOEIC | Business | Family Program |
|--------------------------------------|------|-------|-----------------|----------------|--------------------|-----------------|------------|----------------|
| Level 5 Advanced Plus | C2 | | | | | | | |
| Level 4 Advanced | C1 | ESL 5 | IELTS 6.5 - 7.0 | TOEFL 90 - 100 | | TOEIC 900 | Business 3 | |
| Level 3 Upper Intermediate | B2 | ESL 4 | IELTS 5.5 - 6.0 | TOEFL 60 - 80 | TOEFL Foundation 3 | TOEIC 700 - 800 | Business 2 | |
| Level 2 Intermediate | B1 | ESL 3 | Pre IELTS | Pre TOEFL | TOEFL Foundation 2 | TOEIC 600 | Business 1 | PET |
| Level 1 Pre Intermediate | A2 | ESL 2 | | | TOEFL Foundation 1 | Pre TOEIC | | KET |
| Level 0 Beginner | A1 | ESL 1 | | | | | | Flyers |
| | | | | | | | | Movers |
| | | | | | | | | Starters |

CEFR & SMEAG Courses Equivalencies

CEFR이란 'Common European Framework of Reference'의 약자로 비영어권 국가 학생들의 객관적인 영어레벨을 측정하기 위한 평가 기준입니다. SMEAG ESL 코스는 국제 평가기준에 따라 학생의 레벨을 정확하게 측정하고, 각 레벨에 맞는 최적의 교수법 및 교재를 사용하여 수업을 진행하고 있습니다.

2가지 타입의 ESL 코스

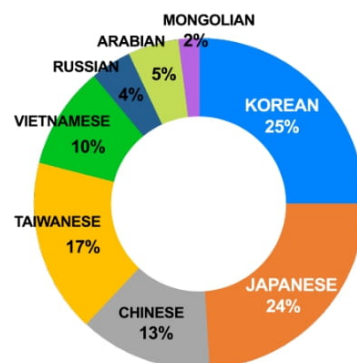
| | Intensive ESL | ESL |
|--------------------------------|----------------------------------|--------------|
| 해당 캠퍼스 | 스파르타 캠퍼스 | 클래식, 캐피탈 캠퍼스 |
| 모닝스파르타 [Vocabulary classes] | 연수 전 기간 의무 참여 | 옵션 |
| 이브닝스파르타 [Grammar & Pattern] | 연수 전 기간 의무 참여 | 첫 4주 의무 |
| 특이 사항 | 주중 단어시험 실시 / 주 2회이상 과락시 금요일 외출금지 | 해당 없음 |

체험형 영어학습 English Club



SMEAG English Club은 다국적 학생들과 함께 체험형 수업을 통해 영어를 쉽고 재미있게 배울 수 있도록 기획된 프로그램입니다. SMEAG English Club에 참여하는 학생들은 다양한 환경에서 사용되는 영어를 듣고 이해하며, 영어사용 환경에 빠르게 적응하고 있습니다. [스파르타, 캐피탈 캠퍼스 실시]

다양한 국적 비율



2019년 평균 학생 국적 비율



SMEAG CAPITAL

THE FIRST CAMPUS

LEARN ENGLISH NATURALLY IN A CASUAL SCHOOL ENVIRONMENT!

- ▶ Expand your opportunities with an official IELTS/TOEFL/TOEIC score
- ▶ Improve Essential English for the International Arena

LOCATION

SMEAG CAPITAL Campus is located in Guadalupe, Cebu, Philippines. Guadalupe is a political center of Cebu province where government agencies surround the CAPITOL. Many of the government's key personnel and their families reside in the residential area surrounding the Capitol making it safe and a dynamic region.

RULES AND REGULATIONS

- Weekday, weekend, and holiday overnight stays are allowed with prior permission.
- During weekdays, students can go out after class (Regular & Evening Sparta)
The curfew will start at 11:00 PM.
- Morning and Evening Sparta classes are mandatory during the first 4 weeks of study. (For TOEIC, IELTS, and TOEFL)
- Only Evening Sparta classes are mandatory for Business English, ESL, and Speaking Master.
- Busy Bee & Family Program will not have mandatory Sparta.

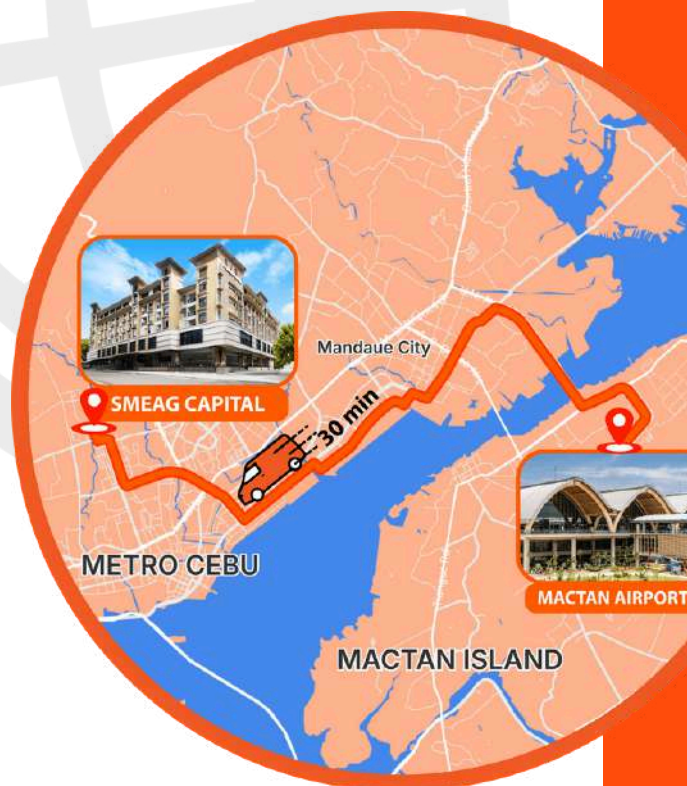
ACCREDITED TEST CENTER

ETS AUTHORIZED
TOEFL® iBT CENTER

FACILITIES AND SERVICES



FROM AIRPORT TO SMEAG CAPITAL CAMPUS

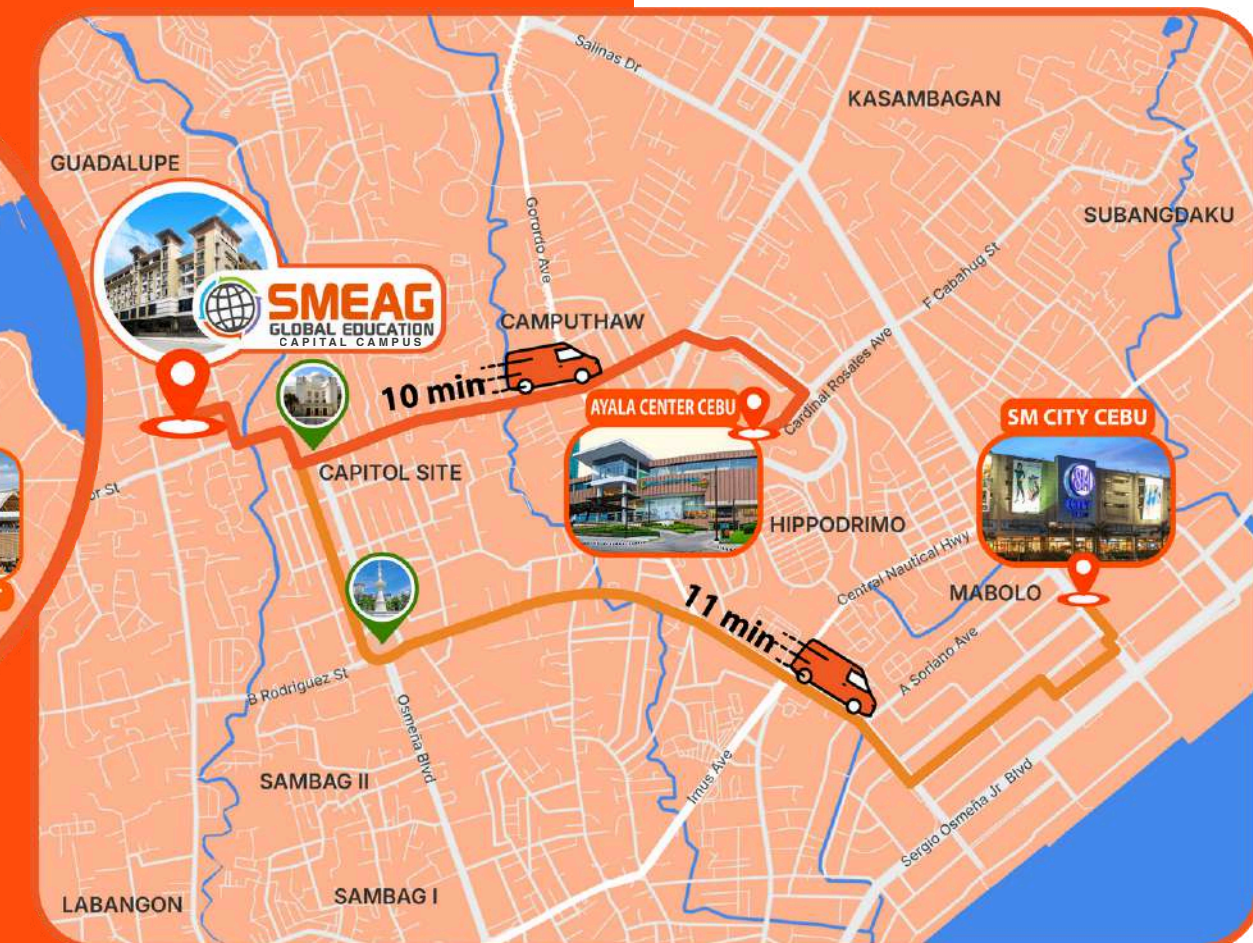




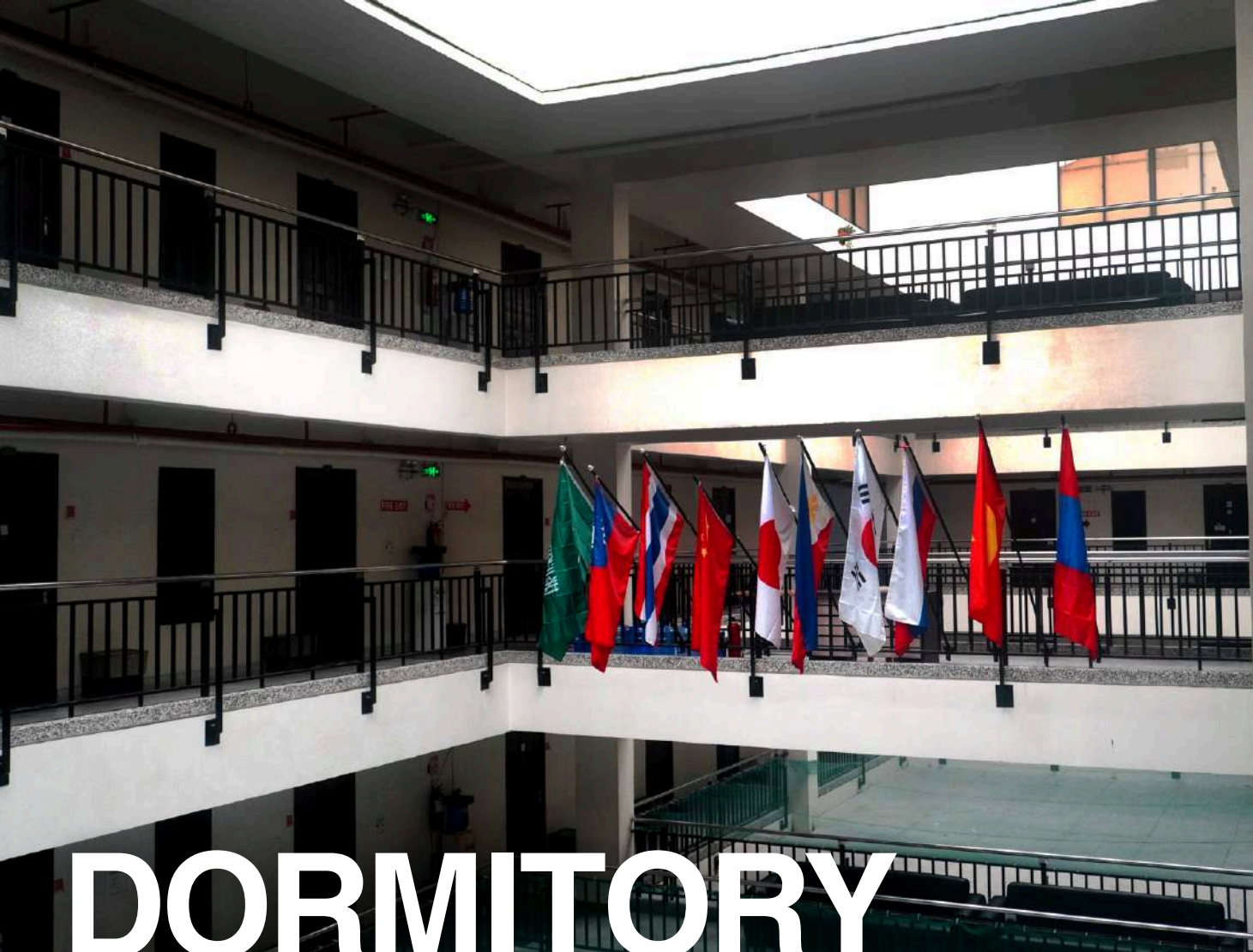
SMEAG CAPITAL CAMPUS

Our school campus at SMEAG is a vibrant and welcoming environment where students from all over the world come together to learn, grow, and thrive. Located in the heart of Cebu City, SMEAG Capital Campus offers a secure and modern learning space designed to support academic excellence and personal development. With well-equipped classrooms, cozy dormitories, and accessible facilities, students enjoy a well-rounded educational experience.

Beyond academics, the campus fosters a diverse community where friendships are formed, cultures are celebrated, and every learner is encouraged to reach their fullest potential in a supportive and inspiring setting.



SMEAG CAPITAL CAMPUS TO SELECTED MALLS



At SMEAG Global Education, we provide students with a comfortable, secure, and well-equipped living environment to support their academic journey.

Our dormitory features modern, spacious bedrooms designed for relaxation and productivity. Each room is furnished with cozy beds, personal study desks, ample storage, and cooling systems to ensure a pleasant stay.

FLOOR LOCATIONS

5F
4F
3F

• Female Dormitory

• Male Dormitory
• Female Dormitory
• Family Dormitory

• Male Dormitory



COMFORTABLE LIVING, DESIGNED FOR LEARNING

Our dormitory rooms at SMEAG Capital Campus are thoughtfully designed to provide students with a safe, clean, and comfortable space to live and study.

Each unit includes a fully furnished bedroom with dedicated study desks, storage space, and air conditioning. This home-like environment supports both independent living and a strong sense of community.

ROOM FEATURES IN THE DORMITORY

■ SINGLE ROOM

■ TWIN ROOM

■ TRIPLE ROOM

■ QUAD ROOM



BED ROOM



STUDY AREA



PANTRY



BATHROOM



LIVING AREA



STORAGE AREA

DOUBLE ROOM

FEATURES



OVERVIEW

The Double Room offers a comfortable and functional layout designed for two students.

It provides a quiet and organized environment that supports both independent study and shared living.

Natural lighting and simple, modern interiors create a relaxing atmosphere ideal for learning and rest.

TWIN BED AREA

Each room includes two single beds, providing a comfortable and relaxing environment after a full day of learning and activities.

The room is thoughtfully designed with a bookshelf partition between the beds, creating both privacy and an inviting atmosphere that supports study, rest, and a sense of personal space.



DUAL DESK



STORAGE AREA



BATHROOM

TRIPLE ROOM

FEATURES



SPACIOUS LIVING FOR THREE

The Triple Room provides an ideal shared setup for three students.

With separate beds and dedicated furniture, the space supports both personal comfort and group interaction.

TRIPLE BED AREA

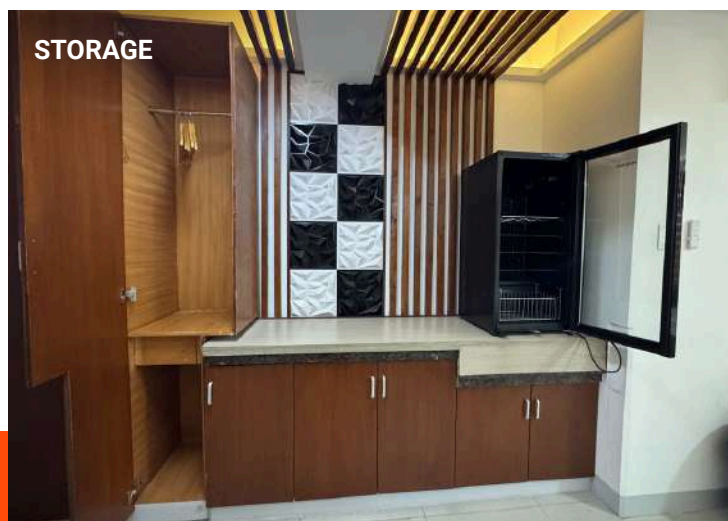
The room features three single beds separated by bookshelf partitions, creating a bright and open layout that provides each student with ample personal space.



BATHROOM

A clean and well-maintained private bathroom offers the comfort of home, complete with a shower area, sink, and toilet.

Each room also provides practical storage space, allowing students to keep their belongings organized and their living area tidy.



STORAGE



TRIO DESK



QUAD ROOM FEATURES

FUNCTIONAL AND FRIENDLY SHARED LIVING

The Quad Room is divided into two open sections, each furnished with two single beds. This arrangement promotes connection while ensuring every student enjoys enough personal space.

ROOM OVERVIEW

This shared room features four single beds, a utility space, and a common bathroom area, offering both comfort and convenience.



BED ROOM



BATHROOM



MAIN BED AREA



SHARED UTILITY SPACE

CLASSROOMS

LEARNING ENVIRONMENT

At SMEAG Capital Campus, classrooms are designed to foster a focused and supportive academic environment. With modern facilities and experienced instructors, students benefit from personalized attention in small group sessions. This approach enhances interaction, promotes open communication, and helps students build real-world confidence in English.



1 on 1 Classroom

Personalized learning at its best! One-on-one classes provide focused instruction tailored to each student's pace and learning goals, helping them build confidence and make remarkable progress in English.



1 on 4 Classroom

Collaborative learning with peers! Small group sessions encourage active participation, idea-sharing, and real-time communication practice in a supportive setting.

1 on 8 classroom

Experience dynamic learning in small groups. Our 1:8 class ratio fosters collaboration, open discussion, and active participation, making it ideal for improving fluency and building confidence in real-life communication.



Group Classroom

Group classes foster shared learning through collaboration and communication. Students benefit from interactive lessons that encourage mutual support and cultural exchange, creating a vibrant and inclusive classroom environment.



FLOOR LOCATIONS

6F
2F

- TOEIC room
- TOEFL room
- Block C/D (Class room)

- Block A/B (Classroom)



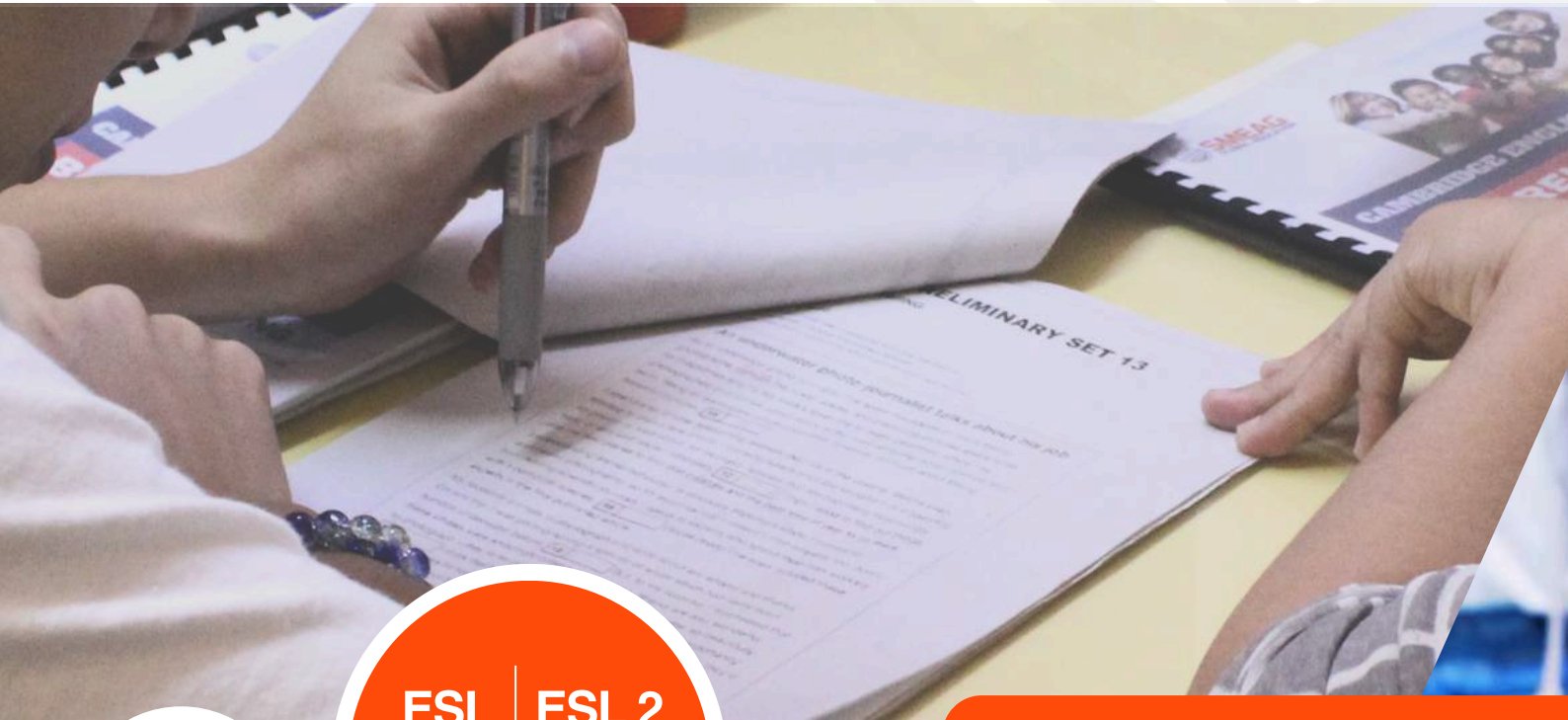
Learning That Grows With You

At SMEAG Capital Campus, every classroom is designed to empower students, whether through one-on-one attention or group collaboration.

Our flexible formats ensure that every learner thrives in an environment tailored to their pace, goals, and personality.

It's more than just a classroom. It's a launchpad for real-life communication and success.

COURSES & PROGRAMS



TOEIC

ESL | ESL 2
SPEAKING
MASTER

IELTS
TOEFL

BUSINESS
ENGLISH

● Guarantee Program

Students must register 12 weeks in advance, follow the designated entrance date, and select a module during registration.

Free tuition will be provided until the target score is achieved, allowing students to continue their studies with confidence and focus until they reach their goals.

● Offered Exam

Students who enroll for a 12-week period will be given one free opportunity to take the actual examination.

Students who receive three warnings from the Academic and/or Administrative Department will be disqualified.

FOR KIDS

FAMILY
PROGRAM

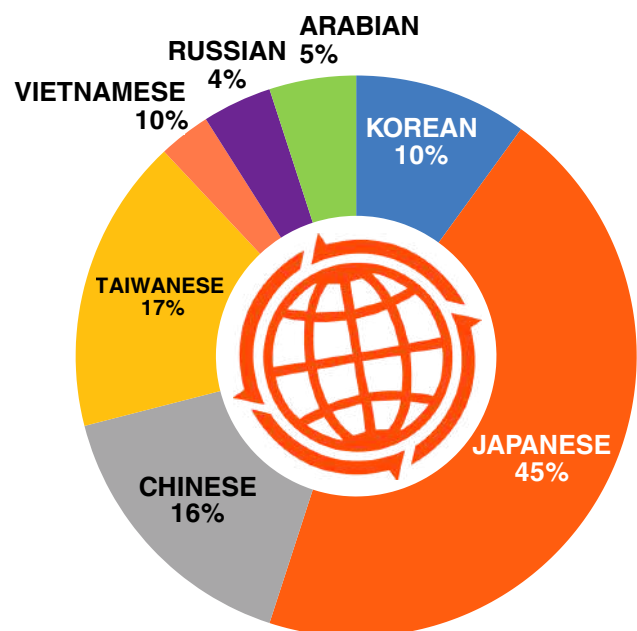
BUSY
BEE

● Diverse Nationality Early Childhood Program

Interacting with children from different nationalities and local Filipino children during group classes.



Multinational Students



SMEAG student nationalities in 2025

ESL by Cambridge

ESL(English as a Second Language) is a program aimed at improving English proficiency so that non-native English speakers can live and learn in an English speaking environment.

ESL by Cambridge, based on the Cambridge exams that measure practical English proficiency, offers courses from Beginner to Advanced levels. This allows us to accurately assess each student’s English ability and provide the most suitable learning path.

The course consists of a maximum of 625 minutes of instruction per day to improve your English skills (listening, speaking, writing, reading) through professional 1 : 1 lessons and to maximize short-term effectiveness.

Recommended Students

Who lack the foundation and want intensive 1 : 1 classes

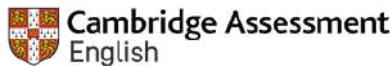
Entrance Dates

Every Monday

TOTAL Class Duration: 625 minutes per day

- Regular class: 270 min
- Special class: 180 min
- Sparta class: 175 min

Test-Hosting agency



| Comparing ESL by Cambridge and the CEFR | | | | |
|--|------------------|------|-----|------------------|
| | | CEFR | | ESL by Cambridge |
| | | | | |
| Common European Framework of Reference(CEFR) | Proficient user | C2 | 230 | C2 Proficiency |
| | | | 200 | |
| | Independent user | C1 | 180 | C1 Advanced |
| | | B2 | 160 | B2 First |
| | | B1 | 140 | B2 Preliminary |
| | Basic User | A2 | 120 | A2 Key Flyer |
| | | A1 | 100 | |
| | | | | Mover Starter |

* Common European Framework of Reference (CEFR): A global standard used to evaluate the English proficiency of learners in countries where English is not the first language. It defines levels of ability to ensure clarity in assessment and is widely recognized around the world.

Real-life English Language learning Cambridge English Assessment

Cambridge English is recognized by over 25,000 universities, employers and governments around the world. In addition, Cambridge English offers students a structured way to improve their English. It helps students to get the practical language skills they need to study or work effectively. SMEAG’s ESL courses are based on Cambridge English, providing students with the opportunity to learn high quality practical English.



PROGRAM DESCRIPTION

| Course | | Course 1 | Course 2 | Course 3 | Course 4 | Course 5 |
|---------------|---------------|--|---|---|---|---|
| | | Beginner A1 | Pre Intermediate A2 | Intermediate B1 | Upper Intermediate B2 | Advanced C1 |
| 06:40 - 08:00 | | Morning Sparta (Vocabulary Class) | | | | |
| 1st | 08:40 - 09:25 | 1:1 Speaking | | 1 : 1 Speaking | | |
| 2nd | 09:30 - 10:15 | 1:1 Listening | | 1 : 1 Listening | | |
| 3rd | 10:25 - 11:10 | 1:1 Reading | | 1 : 1 Reading | | |
| 4th | 11:15 - 12:00 | 1:1 Writing | | 1 : 1 Writing | | |
| 5th | 13:00 - 13:45 | 1:4 Survival & Pattern English A | | 1 : 4 Discussion A | | |
| 6th | 13:50 - 14:35 | 1:4 Survival & Pattern English A | | 1 : 4 Discussion B | | |
| 7th | 14:45 - 15:30 | Special Class 1 | | | | |
| 8th | 15:35 - 16:20 | Sitcom, Movie, Speak Up, Speech & Pronunciation, Music & English Expression | | | | |
| 9th | 16:30 - 17:15 | Special Class 2 | | | | |
| 10th | 17:20 - 18:05 | Sitcom, Movie, Speak Up, Speech & Pronunciation, Music & English Expression | | | | |
| 11th | 19:00 - 19:45 | Evening Sparta (Grammar class) or ESL 2 (1:1 Speaking class) | | | | |
| 12th | 19:50 - 20:35 | | | | | |
| REQUIREMENTS | | None | SMEAG 1L CAMBRIDGE 120 IELTS 2.0 • TOEFL 20 TOEIC 260 or above | SMEAG 2L CAMBRIDGE 130 IELTS 3.5 • TOEFL 40 TOEIC 490 or above | SMEAG 3L CAMBRIDGE 150 IELTS 5.0 • TOEFL 60 TOEIC 680 or above | SMEAG 4M CAMBRIDGE 170 IELTS 7.0 • TOEFL 95 TOEIC 905 or above |
| | | | Official test score or SMEAG test score can be used | | | |
| NOTE | | ※ Students are required to attend the weekly Cambridge mock test every week. ※ ESL 2: Additional 1:1 classes are offered Monday to Friday, except Thursdays for the Weekly Mock Test. | | | | |

SMEAG ESL BY CAMBRIDGE Main Points

1 | ESL programs suit the learner's level of English

The ESL by Cambridge course consists of five levels, from Basic to Advanced English, according to the Cambridge levels. By accurately assessing each learner's proficiency and goals, students can develop well-rounded English skills with the support of specialized teachers.

2 | Specialized teachers divided by specific class

Teachers are professionally trained to deliver specialized classes in Reading, Speaking, Listening and Writing. These courses equip students with the essential skills and knowledge needed for their English proficiency development.

3 | English Qualifications Valid for a Lifetime

Cambridge English Exams are internationally recognized proficiency tests with a legacy of more than 150 years. Through comprehensive preparation, students can enhance their English proficiency and obtain a certificate with lifelong validity.

IELTS

IELTS is an internationally recognized English proficiency test jointly owned by the British Council, IDP Education, and Cambridge University Press & Assessment.

SMEAG's IELTS program covers all four language skills: listening, reading, writing and speaking. Students benefit from high-quality instruction delivered by exceptional teachers. All instructors are selected through a rigorous seven-step process and complete intensive training before they begin teaching.

Recommended Students

- Who plan to study abroad or emigrate to another country
- Who need to acquire a target score in a short period of time
- Who wish to utilize a more in-depth formal English

Entrance Dates

- Every Monday
- IELTS Guarantee course: Arranged Mondays of the month

TOTAL Class Duration: 625 minutes per day

- Regular Class: 360 min
- Special Class: 90 min
- Sparta Class: 175 min

Enrollment period

IELTS Guarantee course : 12 weeks

| Comparing IELTS and the CEFR | | | | | |
|--|--|------------------|-----|---------|---------|
| Common European Framework of Reference(CEFR) | | CEFR | | IELTS | |
| | | C2 | 230 | 8.5-9.0 | |
| | | | 200 | | |
| | | C1 | 180 | 7.0-8.0 | |
| | | Independent user | B2 | 160 | 5.5-6.5 |
| | | | B1 | 140 | 4.0-5.0 |
| | | Basic User | A2 | 120 | 0-3.5 |
| | | | A1 | 100 | |
| | | | | | |

* Common European Framework of Reference (CEFR): A global standard used to evaluate the English proficiency of learners in countries where English is not the first language. It defines levels of ability to ensure clarity in assessment and is widely recognized around the world.

Test-Hosting agency



98% achievement rate! IELTS Guarantee Program

Students who enroll in the IELTS Guarantee Course on the official entrance date and study for more than 12 weeks, maintaining 100% attendance and no warnings, will be eligible for free tuition until they achieve their target score in the official IELTS test. (Accommodation and exam fees are excluded.)



Based on 2025 Guarantee
Graduates' Data



Based on 2025 Students' Data

PROGRAM DESCRIPTION

| Class Time | | Course 1 | Course 2 | Course 3 | Course 4 | Course 5 |
|---------------|--|---|---|---|---|---------------|
| | | Pre-IELTS | 5.5 Guarantee | 6.0 Guarantee | 6.5 Guarantee | 7.0 Guarantee |
| 06:40 - 08:00 | | | Morning Sparta (IELTS Vocabulary Class) | | | |
| 1st | 08:40 - 09:25 | 1:1 Pre Speaking A | | 1 : 1 | Speaking A | |
| 2nd | 09:30 - 10:15 | 1:1 Pre Speaking B | | 1 : 1 | Speaking B | |
| 3rd | 10:25 - 11:10 | 1:1 Pre Writing A | | 1 : 1 | Writing A | |
| 4th | 11:15 - 12:00 | 1:1 Pre Writing B | | 1 : 1 | Writing B | |
| 5th | 13:00 - 13:45 | 1:1 Pre Reading A | | 1 : 4 | Reading A | |
| 6th | 13:50 - 14:35 | 1:1 Pre Reading B | | 1 : 4 | Reading B | |
| 7th | 14:45 - 15:30 | Special Class | | | | |
| 8th | 15:35 - 16:20 | Sitcom, Movie, Speech & Speak Up, Pronunciation, Music & English Expression | | | | |
| 9th | 16:30 - 17:15 | 1:8 Pre Listening A | | 1 : 8 | Listening A | |
| 10th | 17:20 - 18:05 | 1:8 Pre Listening B | | 1 : 8 | Listening B | |
| 11th | 19:00 - 19:45 | Evening Sparta (IELTS Practice Test) | | | | |
| 12th | 19:50 - 20:35 | | | | | |
| REQUIREMENTS | None | SMEAG 2L • IELTS 3.5 TOEFL 40 • TOEIC 490 CAMBRIDGE 140 or above | SMEAG 3L • IELTS 5.0 TOEFL 60 • TOEIC 680 CAMBRIDGE 160 or above | SMEAG 3H • IELTS 6.0 TOEFL 80 • TOEIC 800 CAMBRIDGE 175 or above | Official IELTS Score 6.5 or above | |
| | | Official test score or SMEAG test score can be used | | | | |
| PERIOD | None | ※ Guarantee students must register more than 12 weeks, follow the entrance date and finalize which module will be taken upon registration. | | | | |
| OFFERED EXAM | None | ※ Students with a 12-week enrollment period will be given a free actual examination opportunity (Students with 3 warnings from academic and /or admin department will be disqualified) ※ Free official exam is to be taken 10 weeks after the date of entry. | | | | |
| NOTE | ※ Guarantee course students are required to maintain a complete attendance in Sparta Classes for the first 4 weeks of enrollment as well as a perfect attendance in the weekly IELTS Mock Tests during study period. | | | | | |

SMEAG IELTS Main Points

1 Official Partnership with IDP and the British Council

Through our official partnership with IDP and the British Council, SMEAG provides students with convenient access to official test registration, on-campus support, and immediate assistance tailored to their exam needs.

2 IELTS (PB & CD) Weekly Mock Test

SMEAG's customized IELTS program helps students achieve their target score. Every Thursday, SMEAG provides students with the opportunity to practice a PB/CD Mock Test in the official testing venue.

3 IELTS Guarantee Program

At SMEAG Global Education, IELTS Guarantee students who do not reach their target score are supported with free tuition until success is achieved. (Accommodation and costs such as exam fees, visa, utilities, and textbooks are excluded.) To remain eligible, students must attend all classes and maintain a clean record.

TOEFL

TOEFL, developed by ETS (Educational Testing Service) in the United States, assesses the English proficiency of non-native speakers for academic study. It is primarily intended for students planning to enter universities or graduate schools in the United States, Canada, Australia, the United Kingdom, and other English-speaking countries.

The exam evaluates the four core English skills: listening, reading, writing, and speaking. At SMEAG Capital Campus, exam proctors receive direct training from ETS, ensuring highly effective TOEFL preparation classes.

Recommended Students

- Who plan to study abroad or emigrate to another country
- Who need to acquire a TOEFL target score in a short period of time
- Who wish to utilize a more in-depth formal English

Entrance Dates

Every Monday

TOEFL Guarantee course: Arranged Mondays of the month

TOTAL Class Duration: 625 minutes per day

Regular Class: 360 min

Special Class: 90 min

Sparta Class: 175 min

Enrollment period

TOEFL Guarantee course : 12 weeks



Comparing TOEFL and the CEFR

| | | CEFR | | TOEFL |
|---|------------------|------|----------|-----------|
| | | | | |
| Common European Framework of Reference (CEFR) | Proficient user | C2 | 230 | 114 - 120 |
| | | | 200 | |
| | C1 | 180 | 95 - 113 | |
| | | | | |
| | Independent user | B2 | 160 | 72 - 94 |
| | | | | |
| | B1 | 140 | 42 - 71 | |
| | | | | |
| | Basic User | A2 | 120 | 0 - 41 |
| | | | | |
| | A1 | 100 | | |
| | | | | |

* Common European Framework of Reference (CEFR): A global standard used to evaluate the English proficiency of learners in countries where English is not the first language. It defines levels of ability to ensure clarity in assessment and is widely recognized around the world.

Test-Hosting agency

ETS AUTHORIZED
TOEFL® iBT CENTER

95% achievement rate! TOEFL Guarantee Program

Students who enroll in the TOEFL Guarantee Course on the official entrance date and study for more than 12 weeks, maintaining 100% attendance and no warnings, will be eligible for free tuition until they achieve their target score in the official TOEFL test. (Accommodation and exam fees are excluded.)



Based on 2025
Guarantee Graduates' Data



Based on 2025 Students' Data

PROGRAM DESCRIPTION

| Course | | Course 1 | Course 2 | Course 3 | Course 4 | Course 5 |
|---------------|--|---|---|---|--|-------------|
| | | Pre-TOEFL | TOEFL 60 ↑ | TOEFL 80 ↑ | TOEFL 90 ↑ | TOEFL 100 ↑ |
| 06:40 - 08:00 | | Morning Sparta (TOEFL Listening and Speaking Practice Test) | | | | |
| 1st | 08:40 - 09:25 | 1:1 Speaking A | | 1 : 1 | Speaking A | |
| 2nd | 09:30 - 10:15 | 1:1 Speaking B | | 1 : 1 | Speaking B | |
| 3rd | 10:25 - 11:10 | 1:1 Writing A | | 1 : 1 | Writing A | |
| 4th | 11:15 - 12:00 | 1:1 Writing B | | 1 : 1 | Writing B | |
| 5th | 13:00 - 13:45 | 1:4 Reading A | | 1 : 4 | Reading A | |
| 6th | 13:50 - 14:35 | 1:4 Reading B | | 1 : 4 | Reading B | |
| 7th | 14:45 - 15:30 | Special Class | | | | |
| 8th | 15:35 - 16:20 | Sitcom, Movie, Speak Up, Speech & Pronunciation, Music & English Expression | | | | |
| 9th | 16:30 - 17:15 | 1:8 Listening A | | 1 : 8 | Listening A | |
| 10th | 17:20 - 18:05 | 1:8 Listening B | | 1 : 8 | Listening B | |
| 11th | 19:00 - 19:45 | Evening Sparta (TOEFL Reading & Writing Practice Test) | | | | |
| 12th | 19:50 - 20:35 | | | | | |
| REQUIREMENTS | None | SMEAG 2L • TOEFL 40 CAMBRIDGE 130 IELTS 3.5 • TOEIC 490 or above | SMEAG 3L • TOEFL 60 CAMBRIDGE 150 IELTS 5.0 • TOEIC 680 or above | SMEAG 3H • TOEFL 80 CAMBRIDGE 160 IELTS 6.0 • TOEIC 800 or above | Official TOEFL Score 90 or above | |
| | | Official test score or SMEAG test score can be used | | | | |
| PERIOD | None | ※ Guarantee students must register more than 12 weeks, follow the entrance date. | | | | |
| OFFERED EXAM | None | ※ Students with a 12-week enrollment period will be given a free actual examination opportunity (Students with 3 warnings from academic and /or admin department will be disqualified) ※ Free official exam is to be taken 10 weeks after the date of entry. | | | | |
| NOTE | ※ Guarantee course Students are required to maintain a complete attendance in Sparta Classes for the first 4 weeks of enrollment as well as a perfect attendance in the weekly TOEFL Mock Tests during study period. | | | | | |

SMEAG TOEFL MAIN POINTS

1 ETS Authorized TOEFL Testing Venue

SMEAG Capital Campus is an authorized iBT TOEFL Testing Venue in Cebu, Philippines, verified by ETS, the global organization that manages TOEIC and TOEFL. Since 2014, official iBT TOEFL tests have been administered at SMEAG Capital Campus in cooperation with ETS.

2 iBT TOEFL Weekly Mock Test

SMEAG's customized TOEFL program helps students obtain their target score. Every Wednesday, SMEAG provides students a chance to practice iBT/CBT Mock Test in the testing venue.

3 TOEFL Guarantee Program

At SMEAG Global Education, TOEFL Guarantee students who do not reach their target score are supported with free tuition until success is achieved. (Accommodation and costs such as exam fees, visa, utilities, and textbooks are excluded.) Eligibility requires 100% attendance in regular classes and no warnings.

Family Program

SMEAG's family training program is based on the Cambridge YLE (Cambridge Young learners English). This course aims to learn useful English and basic English skills so that you can write and speak in English everyday.

With the Cambridge YLE selected by parents from 68 countries around the world to help your child learn effective English, you can see how well your child is improving his or her English language skills on an internationally recognized basis.



Recommended Students

Those who wish to study together with their children from 6 to 12 years old

Entrance Dates

Every Monday

TOTAL Class Duration: 500 minutes per day

Regular class: 270 min

Activity class : 135 min (Children Only)

Sparta class: 95 min (Children Only)



Test-Hosting agency



About the Common European Framework of Reference for Languages (CEFR)

The Common European Framework of Reference for Languages (CEFR) is an international standard for describing language ability. It describes language ability on a six-point scale, from A1 for beginners, up to C2 for those who have mastered a language. This makes it easy for anyone involved in language teaching and testing, such as teachers or learners, to see the level of different qualifications. It also means that employers and educational institutions can easily compare our qualifications to other exams in their country.

PROGRAM DESCRIPTION

| Course | | Children | | | | | Parents |
|-------------|---------------|--|--|-------|-----|-----|--------------------|
| | | Starter | Mover | Flyer | KET | PET | ESL by Cambridge |
| 1st | 08:40 - 09:25 | 1 : 1 Listening | | | | | 1 : 1 Listening |
| 2nd | 09:30 - 10:15 | 1 : 1 Speaking | | | | | 1 : 1 Speaking |
| 3rd | 10:25 - 11:10 | 1 : 1 Reading | | | | | 1 : 1 Reading |
| 4th | 11:15 - 12:00 | 1 : 1 Writing | | | | | 1 : 1 Writing |
| 5th | 13:00 - 13:45 | 1 : 4 Discussion A | | | | | 1 : 4 Discussion A |
| 6th | 13:50 - 14:35 | 1 : 4 Discussion B | | | | | 1 : 4 Discussion B |
| 7th | 14:45 - 15:30 | Daily Activities (Story telling • Swimming • Dancing • Cooking • Art) | | | | | FREE TIME |
| 8th | 15:35 - 16:20 | | | | | | |
| 9th | 16:30 - 17:15 | | | | | | |
| 10th | 17:20 - 18:05 | Free time | | | | | |
| 11th | 19:00 - 19:45 | 1:4 Vocabulary Class (A) | | | | | |
| 12th | 19:50 - 20:35 | 1:4 Vocabulary Class (B) | | | | | |
| REQUIREMENT | | None | A0 | A1 | A2 | B1 | SMEAG LEVEL |
| | | | Official test score or SMEAG Weekly Mock test score can be used. | | | | |
| NOTE | | ※ Students must present the required entry score to change the class level. ※ 100% mandatory attendance for regular classes and weekly mock test. (Parents' weekly test is optional.) | | | | | |

SMEAG FAMILY PROGRAM PLUS MAIN POINTS

1 Daily Activity Class

Afternoon activity classes are offered to create an enjoyable and dynamic learning experience, encouraging students to practice English in a fun and relaxed environment while building confidence and teamwork through interactive activities.

2 Intensive Night Class

In addition to daytime lessons, the SMEAG Family Program provides special evening classes that give children extra opportunities to practice and grow, helping them reinforce what they have learned during the day through enjoyable and interactive activities.

3 Reliable Curriculum

Cambridge YLE is the ideal program for children, using the same textbooks as the Family Program to ensure consistency in learning and smooth progression. It helps young learners build a solid foundation in English while developing confidence through enjoyable and structured activities.

DAILY ACTIVITY



ART

A colorful space where creativity comes to life! Kids explore their imagination through drawing, painting, and crafting, helping them express themselves while building fine motor skills and confidence.

DANCING/ZUMBA

Feel the rhythm and have fun! Kids move to lively music, learning coordination and confidence while expressing themselves through energetic dance.



SWIMMING

Safety meets fun in our swimming program! Guided by trained instructors, kids learn basic strokes and water confidence while enjoying active play in a safe and supportive environment.

COOKING

Little chefs step into the kitchen to explore simple, kid-friendly recipes! This fun, hands-on class builds healthy habits and basic cooking skills while sparking creativity through every delicious activity.



STORYTELLING

Imagination takes center stage as children dive into the world of stories. Through interactive reading, role-playing, and group discussions, kids develop language skills, listening, and a love for books.

BUSY BEE

Busy Bee is an early childhood English program open to all children aged 1.6 to 5.

It provides a nurturing and stimulating environment where young learners can take their first steps in English while playing, exploring, and interacting with peers from diverse cultural backgrounds.

Parents also have the opportunity to join SMEAG's courses, making it possible for families to learn side by side and share in a meaningful cultural exchange from the very beginning of their educational journey.



MONTHLY ACTIVITIES

Monthly activities are organized, which may include a Halloween costume party at the school cinema or visits to public facilities such as the library or fire station. Parents are welcome to participate in these activities with their children.

MONDAY TO FRIDAY CLASS

LEVEL 1: EASY STARTER DAILY SCHEDULE 1.6 years old to 3.6 years old

| | | |
|-------------|---------------------------------|---|
| 08:00~09:00 | Drop off/Play time | Kids will be dropped off at the starting time and will enjoy fun activities. |
| 09:00~11:00 | Class/Music Time/Writing | During this class hour, kids will be able to talk and interact with one another. The main lesson covers English (reading, writing, and speaking) as well as Math. |
| 11:00~12:00 | Class/Art Class | Children will take 1-on-1 art tutorials where they can freely express their creativity. |
| 12:00~13:00 | Pick up/Lunch | Kids can take their lunch break and may also be picked up afterwards. |
| 13:00~14:30 | Nap Time | Kids can take a nap to recharge. |
| 14:30~16:30 | Group Class | Our group class will be mixed with local students. |
| 16:30~17:00 | Pick up time/Art Class | Kids can be picked up after art class. |

LEVEL 2 : BEGINNER DAILY SCHEDULE 3.7 years old to 5 years old

| | | |
|-------------|---------------------------------|---|
| 08:00~09:00 | Drop off/Play time | Kids will be dropped off at the starting time and will enjoy fun activities. |
| 09:00~11:00 | Class/Music Time/Writing | During this class hour, kids will be able to talk and interact with one another. The main lesson covers English (reading, writing, and speaking) as well as Math. |
| 11:00~12:00 | Class/Art Class | Children will take 1-on-1 art tutorials where they can freely express their creativity. |
| 12:00~13:00 | Pick up/Lunch | Kids can take their lunch break and may also be picked up afterwards. |
| 13:00~14:30 | Nap Time/Class Time | Kids can take a nap to recharge. |
| 14:30~16:30 | Group Class | Our group class will be mixed with local students. |
| 16:30~17:00 | Pick up time/Art Class | Kids can be picked up after art class. |



BUSY BEE BOOKS

Give Your Child a Head Start with SMEAG!

With The Progressive Approach to Language (Kinder 2), children experience enjoyable and purposeful lessons. Each activity is carefully designed to strengthen their English foundation while encouraging curiosity and confidence in learning.



STUDY ROOM



NAP ROOM



SPECIAL FEATURES

SMEAG
Capital Campus

SMEAG SPECIAL ACTIVITIES



PAPA KIT'S ACTIVITY

For families and groups, Papa Kit's Marina & Fishing Lagoon provides a complete package of activities. Guests can enjoy dining options, rental accommodations, and exciting outdoor adventures. Located in Silot Bay, Liloan, Cebu, Papa Kit's is a perfect destination for leisure and recreation.



CEBU CITY TOURS

Discover a new side of Cebu through outdoor attractions such as Little Kyoto, Sirao Garden, Tops, and many more.



ANJO WORLD

As Cebu's first theme park, Anjo World features more than 12 world-class rides and attractions that the whole family will surely enjoy.



VOLUNTEER ACTIVITY

Students from SMEAG Capital Campus recently extended their compassion beyond the classroom by volunteering at Bonita: Home for Young Girls.

With open hearts and helping hands, they shared meaningful moments with the children through games, storytelling, and meals together. The visit was not only an act of kindness but also a powerful reminder of how even small gestures of service can create a lasting impact.



CEBU SAFARI

Learners embarked on an exciting and educational trip to Cebu Safari & Adventure Park, one of Cebu City's preserved wildlife sanctuaries.

From observing majestic tigers to seeing crocodiles and monkeys up close, students experienced nature firsthand while gaining a deeper appreciation for conservation. The adventure was not only informative but also a fun and unforgettable opportunity to bond with classmates, explore local biodiversity, and enrich their time in the Philippines beyond the classroom.

ENCANTO ACTIVITY

Discover a new side of Cebu's outdoor activities at Encanto, featuring live bands, a pool, a restobar, and great food.



ENGLISH ONLY CHALLENGE **ACTIVITIES** (EOC)



EXPLORING KENNETH COBONPUE'S GALLERY

During the English Only Challenge (EOC) activities, our students had the special opportunity to visit the showroom of renowned Filipino designer Kenneth Cobonpue in Cebu City. This inspiring experience allowed them to discover Filipino creativity, craftsmanship, and cultural heritage through artistic expression.

JOURNALISM ACTIVITIES

Students have the chance to learn and showcase their abilities in public speaking, storytelling, and teamwork, while also gaining firsthand insight into the fast-paced world of TV production. This activity serves as a meaningful conclusion to their time in Cebu, empowering them with a deeper appreciation for media, the power of communication, and the importance of sharing ideas across cultures.



DRIED MANGO FACTORY

Discover how these dried mangoes are made by Profood International Corporation, the largest Philippine-based dried fruit producer and a leading name in world-class processed fruit products from the Philippines.



SMEAG CAPITAL CAMPUS

Emillio Osmeña cor., Bataan St., Guadalupe, Cebu City, Philippines
+63-32-232-7343

www.smeag.com

Copyright © 2025 SMEAG GLOBAL EDUCATION

